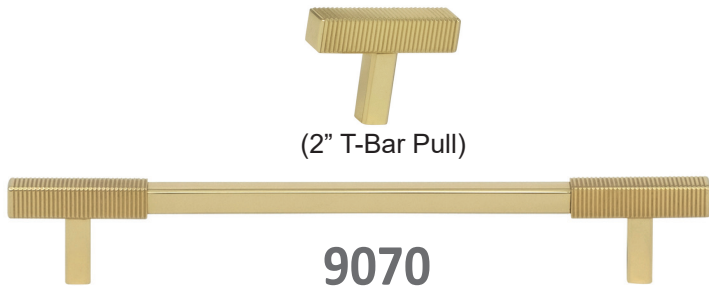


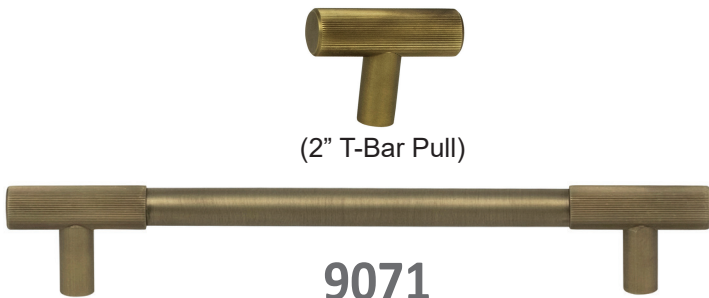
OMNIA Maxuma



(2" T-Bar Pull)

9070

Square, Vertical Ribbed



(2" T-Bar Pull)

9071

Round, Horizontal Ribbed



(2" T-Bar Pull)

9072

Round, Knurled

	Item #	Center to Center	Overall Length	Proj.	FINISHES		
					US3A US14 US26	US4 US15	US5 US10B
9070	9070/50	N/A	2"	1½"	\$26	\$30	
T-Bar/ Cabinet Pull	9070/102	4"	6"	1½"	38	44	
	9070/153	6"	8"	1½"	47	54	
	9070/203	8"	10"	1½"	55	63	
	9070/254	10"	12"	1½"	63	72	
	9070/305	12"	14"	1½"	71	81	
	9070/457	18"	20"	1½"	94	108	

	Item #	Center to Center	Overall Length	Proj.	FINISHES		
					US3A US14 US26	US4 US15	US5 US10B
9070P	9070P/305	12"	14½"	2"	275	316	
Appliance Pull	9070P/305B*	12"	14½"	2"	275	316	
	9070P/457	18"	20½"	2"	372	428	
	9070P/457B*	18"	20½"	2"	372	428	

*To achieve back-to-back, order one regular pull and one B.

	Item #	Center to Center	Overall Length	Proj.	FINISHES		
					US3A US14 US26	US4 US15	US5 US10B
9071	9071/50	N/A	2"	1⅝"	\$26	\$30	
T-Bar/ Cabinet Pull	9071/102	4"	6"	1⅝"	50	58	
	9071/153	6"	8"	1⅝"	62	71	
	9071/203	8"	10"	1⅝"	74	85	
	9071/254	10"	12"	1⅝"	85	98	
	9071/305	12"	14"	1⅝"	97	112	
	9071/457	18"	20"	1⅝"	132	152	

	Item #	Center to Center	Overall Length	Proj.	FINISHES		
					US3A US14 US26	US4 US15	US5 US10B
9071P	9071P/305	12"	14½"	2"	206	236	
Appliance Pull	9071P/305B*	12"	14½"	2"	206	236	
	9071P/457	18"	20½"	2"	276	318	
	9071P/457B*	18"	20½"	2"	276	318	

*To achieve back-to-back, order one regular pull and one B.

	Item #	Center to Center	Overall Length	Proj.	FINISHES		
					US3A US14 US26	US4 US15	US5 US10B
9072	9072/50	N/A	2"	1⅝"	\$26	\$30	
T-Bar/ Cabinet Pull	9072/102	4"	6"	1⅝"	50	58	
	9072/153	6"	8"	1⅝"	62	71	
	9072/203	8"	10"	1⅝"	74	85	
	9072/254	10"	12"	1⅝"	86	99	
	9072/305	12"	14"	1⅝"	97	112	
	9072/457	18"	20"	1⅝"	133	153	

	Item #	Center to Center	Overall Length	Proj.	FINISHES		
					US3A US14 US26	US4 US15	US5 US10B
9072P	9072P/305	12"	14½"	2"	209	241	
Appliance Pull	9072P/305B*	12"	14½"	2"	209	241	
	9072P/457	18"	20½"	2"	281	323	
	9072P/457B*	18"	20½"	2"	281	323	

*To achieve back-to-back, order one regular pull and one B.



Optional Backplates



8000
Available with any Ultima pull

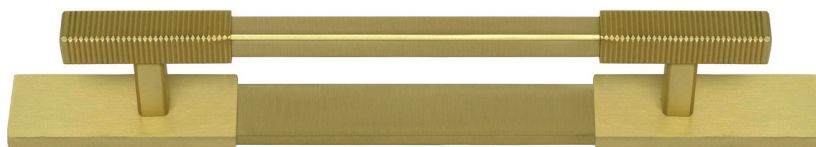


9061 pull shown w/ 8000 backplate

Item #	Center to Center	Overall Length	Proj.	FINISHES		
				US3A US14 US26	US4 US15	US5 US10B
8000/102	4"	6"	3/16"	\$23		\$27
8000/153	6"	8"	3/16"	31		36
8000/203	8"	10"	3/16"	39		45
8000/254	10"	12"	3/16"	47		54
8000/305	12"	14"	3/16"	55		63
8000/457	18"	20"	3/16"	78		90



9000
Available with 9070, 9071 and 9072 pulls

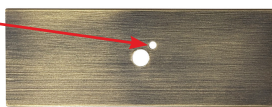


9070 pull shown w/ 9000 backplate

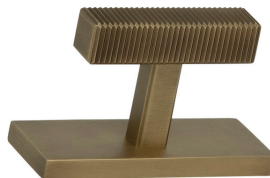
Item #	Center to Center	Overall Length	Proj.	FINISHES		
				US3A US14 US26	US4 US15	US5 US10B
9000/102	4"	7 1/2"	1/4"	\$38		\$43
9000/153	6"	9 1/2"	1/4"	44		51
9000/203	8"	11 1/2"	1/4"	51		59
9000/254	10"	13 1/2"	1/4"	57		65
9000/305	12"	15 1/2"	1/4"	64		74
9000/457	18"	21 1/2"	1/4"	84		97



Pin on bottom of post fits into hole on backplate to keep T-Bar pull from twisting



9000/70
2.75" l x 1" w x .25" h backplate available with any T-Bar Pull design



9070/50 T-Bar pull shown w/ 9000/70 backplate

Item #	Overall Length	Proj.	FINISHES		
			US3A US14 US26	US4 US15	US5 US10B
9000/70	2 3/4"	1/4"	\$24		\$29



9020
Round, Vertical Ribbed

Item #	Dia.	Proj.	FINISHES		
			US3A US14 US26	US4 US15	US5 US10B
9020 Cabinet Knob	9020/25	1"	1"	\$18	\$28
	9020/32	1 1/4"	1 1/4"	25	32
	9020/38	1 1/2"	1 1/2"	32	39



9021
Square, Vertical Ribbed

Item #	Sq.	Proj.	FINISHES		
			US3A US14 US26	US4 US15	US5 US10B
9021 Cabinet Knob	9021/25	1"	1"	\$18	\$28
	9021/32	1 1/4"	1 1/4"	25	32
	9021/38	1 1/2"	1 1/2"	42	48