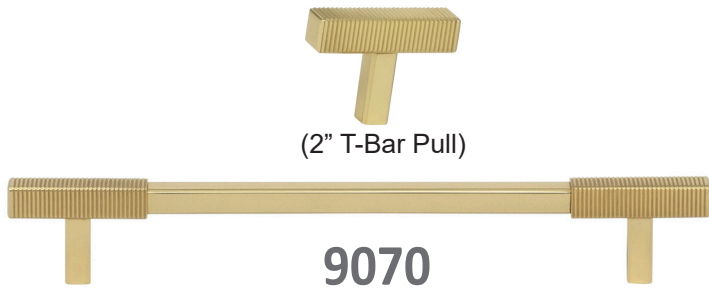
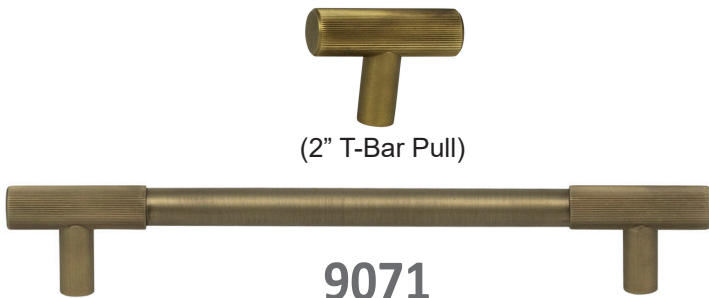


OMNIA Maxuma



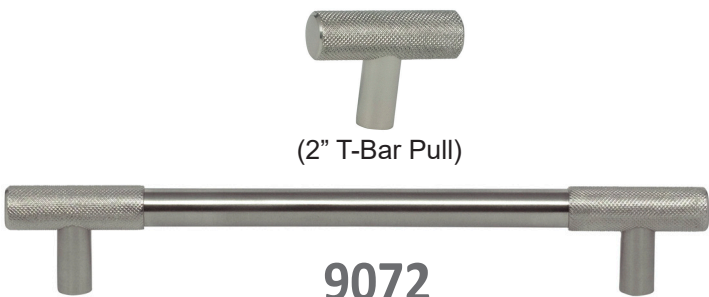
9070
Square, Vertical Ribbed

Item #	Center to Center	Overall Length	Proj.	FINISHES		
				US3A US14 US26	US4 US15	US5 US10B
9070	9070/50	N/A	2"	1 1/2"	\$26	\$30
T-Bar/ Cabinet Pull	9070/102	4"	6"	1 1/2"	38	44
	9070/153	6"	8"	1 1/2"	47	54
	9070/203	8"	10"	1 1/2"	55	63
	9070/254	10"	12"	1 1/2"	63	72
	9070/305	12"	14"	1 1/2"	71	81
	9070/457	18"	20"	1 1/2"	94	108



9071
Round, Horizontal Ribbed

Item #	Center to Center	Overall Length	Proj.	FINISHES		
				US3A US14 US26	US4 US15	US5 US10B
9071	9071/50	N/A	2"	1 5/8"	\$26	\$30
T-Bar/ Cabinet Pull	9071/102	4"	6"	1 5/8"	50	58
	9071/153	6"	8"	1 5/8"	62	71
	9071/203	8"	10"	1 5/8"	74	85
	9071/254	10"	12"	1 5/8"	85	98
	9071/305	12"	14"	1 5/8"	97	112
	9071/457	18"	20"	1 5/8"	132	152



9072
Round, Knurled

Item #	Center to Center	Overall Length	Proj.	FINISHES		
				US3A US14 US26	US4 US15	US5 US10B
9072	9072/50	N/A	2"	1 5/8"	\$26	\$30
T-Bar/ Cabinet Pull	9072/102	4"	6"	1 5/8"	50	58
	9072/153	6"	8"	1 5/8"	62	71
	9072/203	8"	10"	1 5/8"	74	85
	9072/254	10"	12"	1 5/8"	86	99
	9072/305	12"	14"	1 5/8"	97	112
	9072/457	18"	20"	1 5/8"	133	153

9072P	9072P/305	12"	14 1/2"	2"	209	241
Appliance Pull	9072P/305B*	12"	14 1/2"	2"	209	241
	9072P/457	18"	20 1/2"	2"	281	323
	9072P/457B*	18"	20 1/2"	2"	281	323

*To achieve back-to-back, order one regular pull and one B.

*To achieve back-to-back, order one regular pull and one B.

*To achieve back-to-back, order one regular pull and one B.

Suggested retail prices effective December 1, 2024



Optional Backplates



8000

Available with any Ultima pull



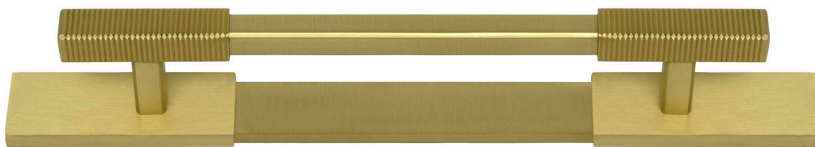
9061 pull shown w/ 8000 backplate

Item #	Center to Center	Overall Length	Proj.	FINISHES		
				US3A US14 US26	US4 US15	US5 US10B
8000/102	4"	6"	3/16"	\$23	\$27	
8000/153	6"	8"	3/16"	31	36	
8000/203	8"	10"	3/16"	39	45	
8000/254	10"	12"	3/16"	47	54	
8000/305	12"	14"	3/16"	55	63	
8000/457	18"	20"	3/16"	78	90	
8000P/305	12"	16"	1/4"	107	123	
8000P/457	18"	22"	1/4"	148	171	



9000

Available with 9070, 9071 and 9072 pulls

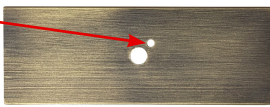


9070 pull shown w/ 9000 backplate

Item #	Center to Center	Overall Length	Proj.	FINISHES		
				US3A US14 US26	US4 US15	US5 US10B
9000/102	4"	7 1/2"	1/4"	\$38	\$43	
9000/153	6"	9 1/2"	1/4"	44	51	
9000/203	8"	11 1/2"	1/4"	51	59	
9000/254	10"	13 1/2"	1/4"	57	65	
9000/305	12"	15 1/2"	1/4"	64	74	
9000/457	18"	21 1/2"	1/4"	84	97	
9000P/305	12"	16 1/2"	1/4"	87	100	
9000P/457	18"	22 1/2"	1/4"	114	131	

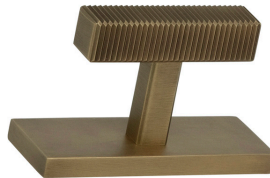


Pin on bottom of post fits into hole on backplate to keep T-Bar pull from twisting



9000/70

2.75" l x 1" w x .25" h backplate available with any T-Bar Pull design



9070/50 T-Bar pull shown w/ 9000/70 backplate

Item #	Overall Length	Proj.	FINISHES		
			US3A US14 US26	US4 US15	US5 US10B
9000/70	2 3/4"	1/4"	\$24	\$29	



9020

Round, Vertical Ribbed

Item #	Dia.	Proj.	FINISHES		
			US3A US14 US26	US4 US15	US5 US10B
9020/25	1"	1"	\$18	\$28	
9020/32	1 1/4"	1 1/4"	25	32	
9020/38	1 1/2"	1 1/2"	32	39	



9021

Square, Vertical Ribbed

Item #	Sq.	Proj.	FINISHES		
			US3A US14 US26	US4 US15	US5 US10B
9021/25	1"	1"	\$18	\$28	
9021/32	1 1/4"	1 1/4"	25	32	
9021/38	1 1/2"	1 1/2"	42	48	